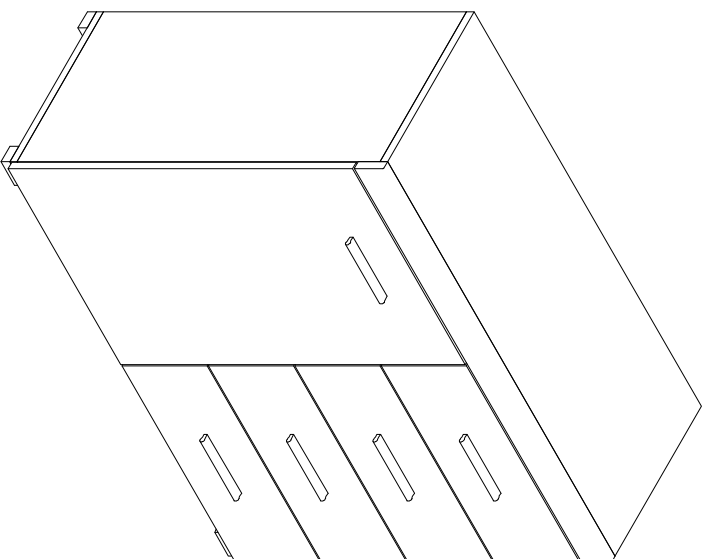


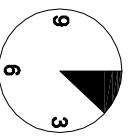
FALCO

FK100



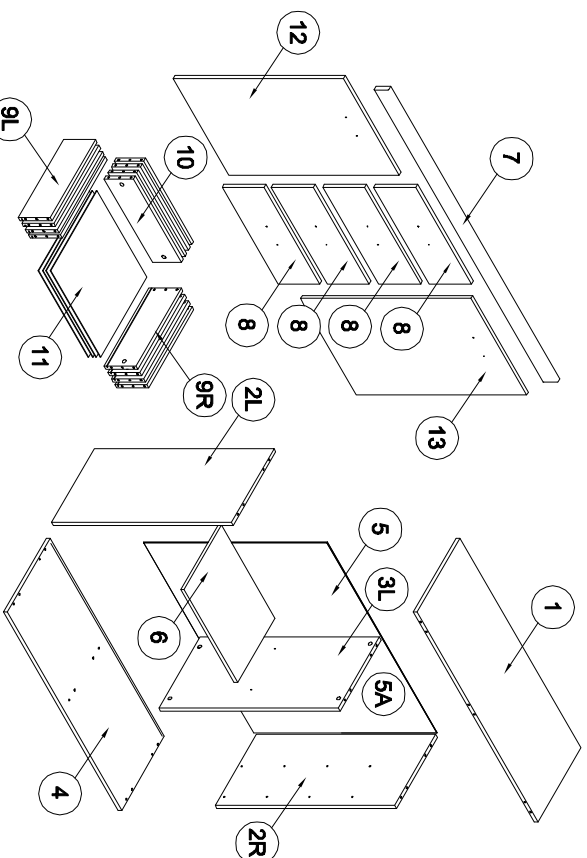
6.6.2017

- D** Montageanleitung
- FR** Notice de montage
- NL** Handleiding voor de montage
- CZ** Montážní návod
- HU** Szerelési útmutató
- TR** Montaj talimatı
- GB** Assembly Instructions
- IT** Istruzioni di montaggio
- PL** Instrukcja montażu
- SK** Návod na montáž
- RO** Instrucțiunile de montaj
- RU** Инструкции по монтажу

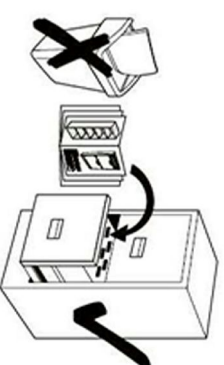
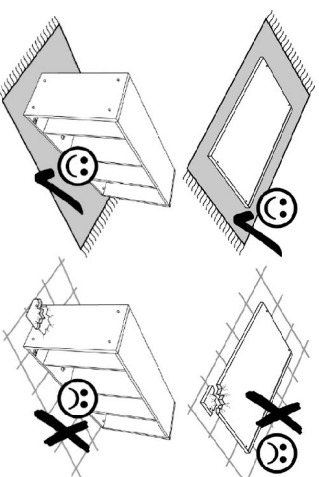


20 min.

1

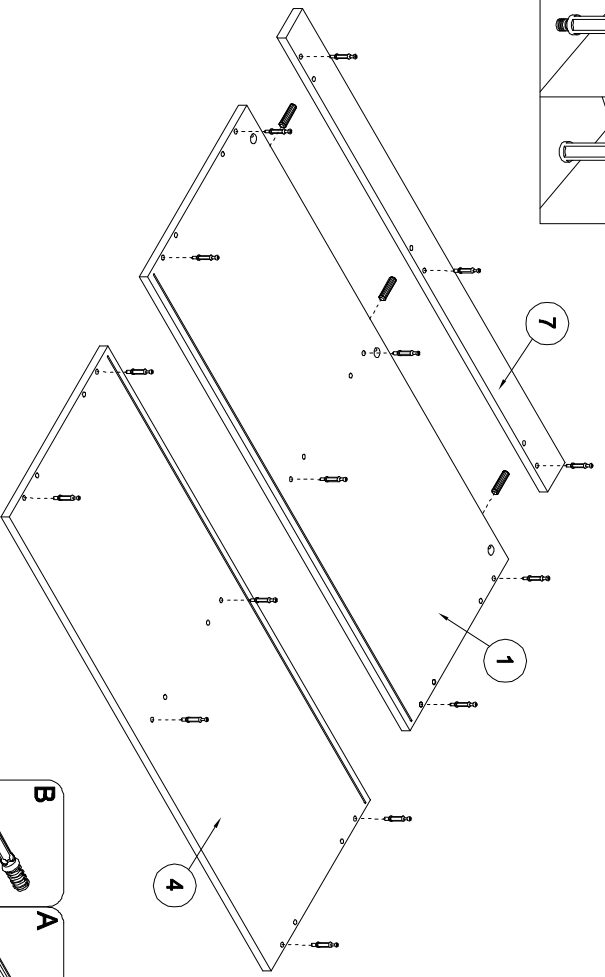
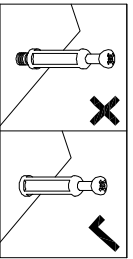


ZC x5	Y x5	W x5	YA x10	PC x2	NA x4	ND x24	C x31	Z x29
B x31	A x47	RPS x4	RC x2	H x4	NB x24	N x21	Z x8	
	6x32	360	4x27	6,5x13	3,5x13	3x20		



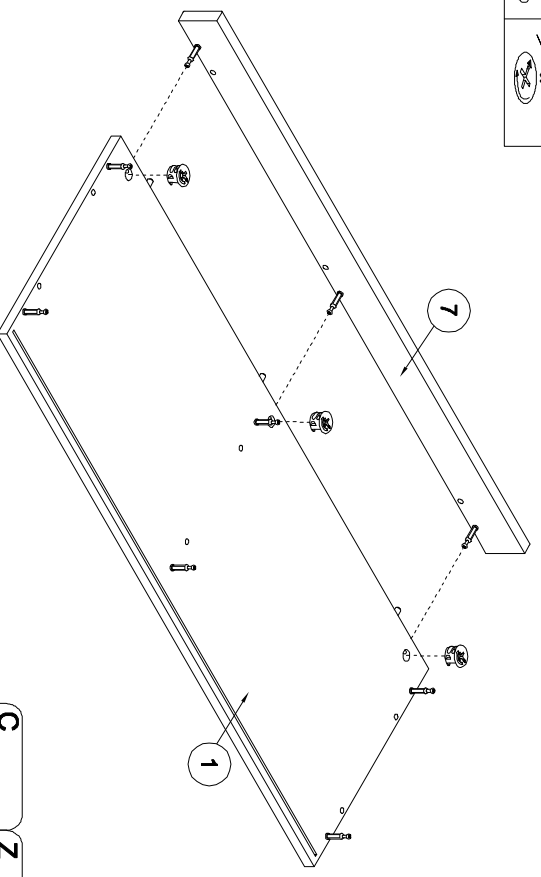
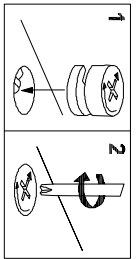
2

3



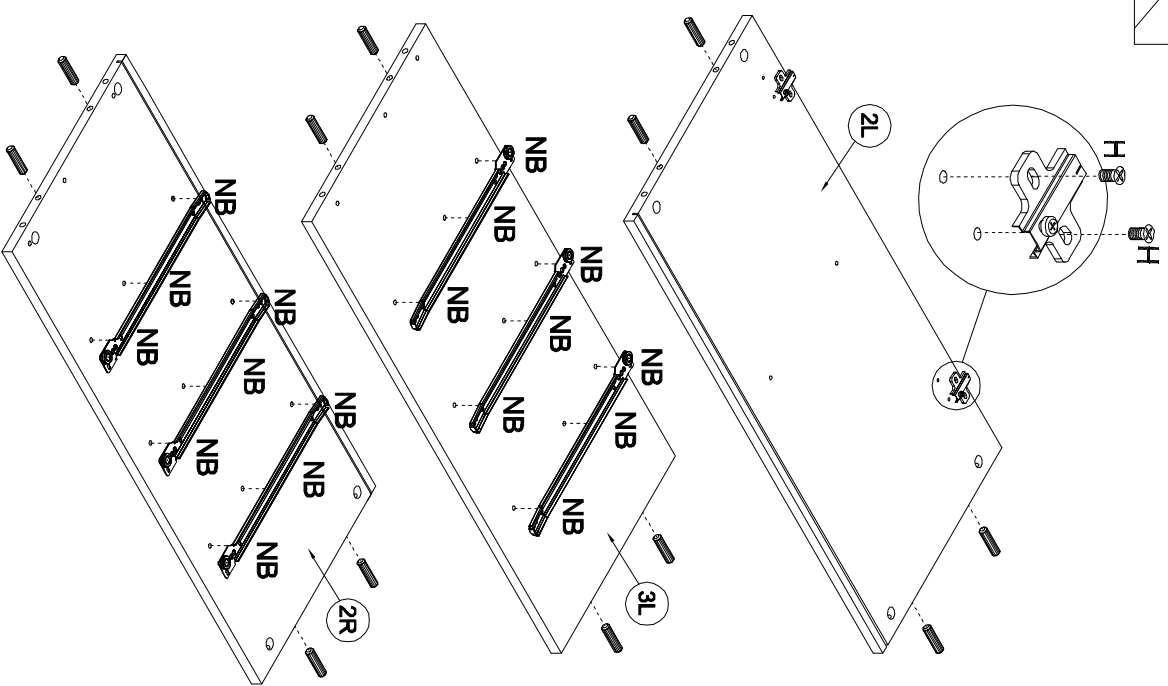
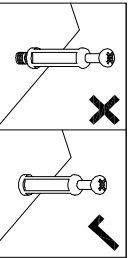
- B** x15
- A** 8x32 x3

4



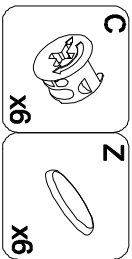
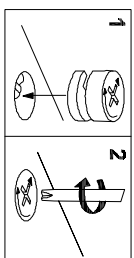
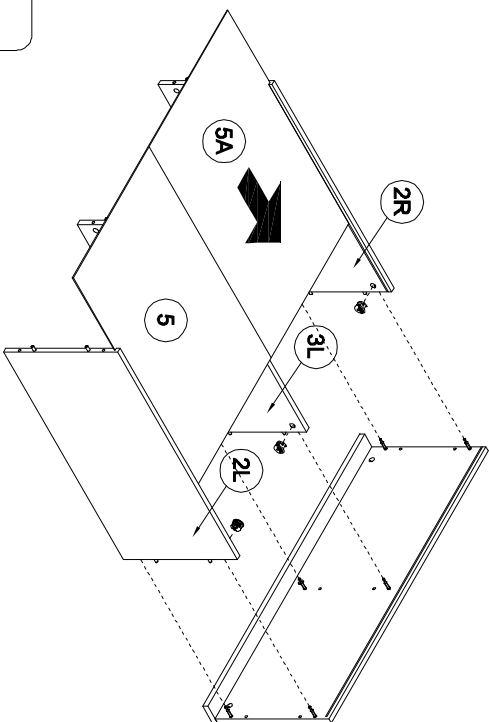
- C** x3
- Z** x3

5

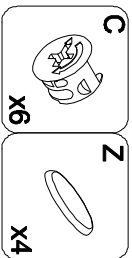
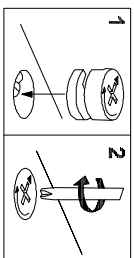
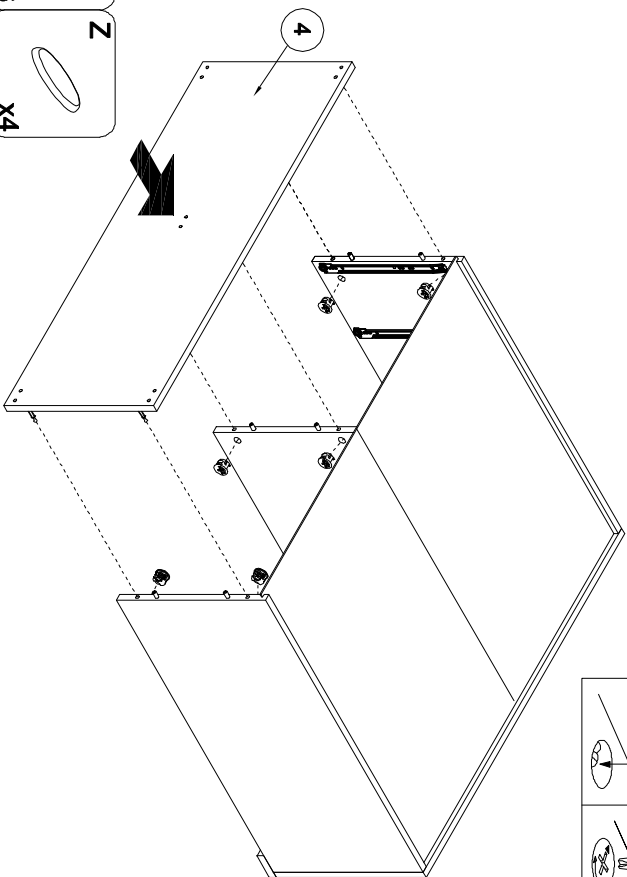


- RPS** 360 x3
- A** 8x32 x3
- RC** x12
- H** 6.5x13 x2
- NB** 3.5x13 x4
- NB** 3.5x13 x18

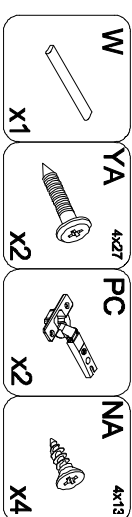
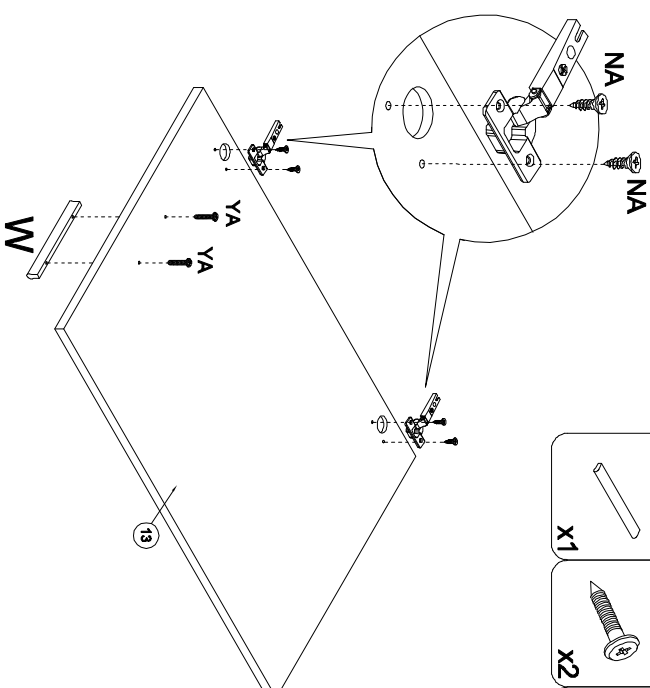
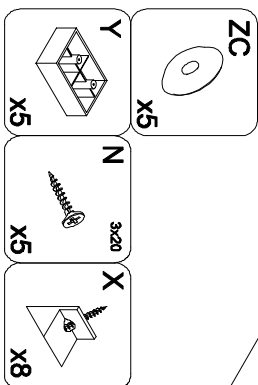
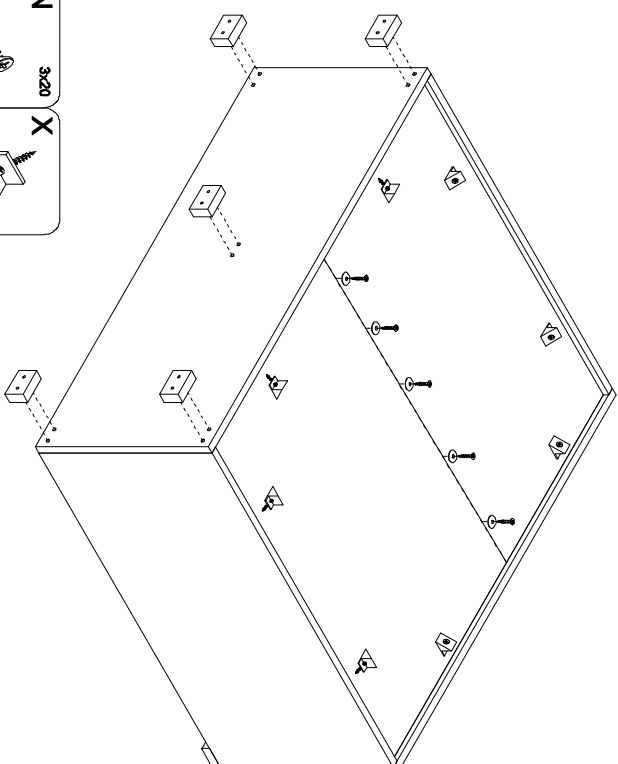
6



8

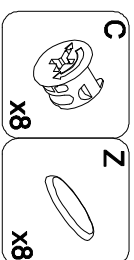
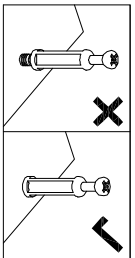
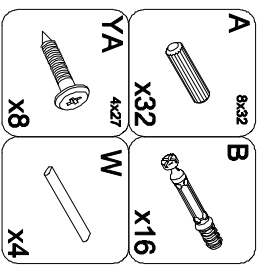
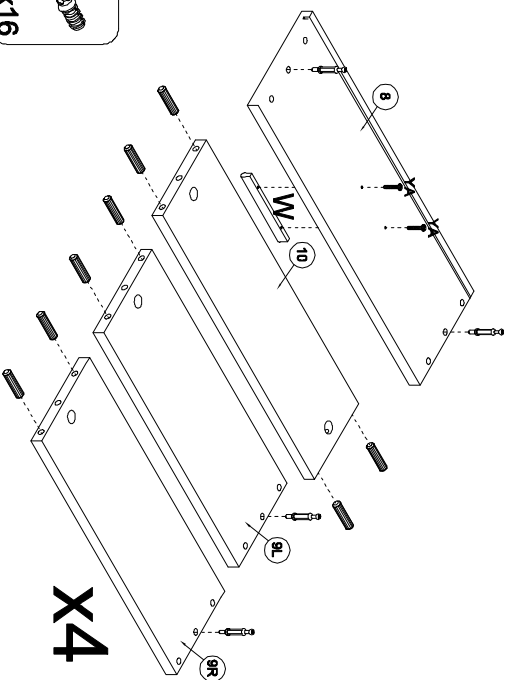


1

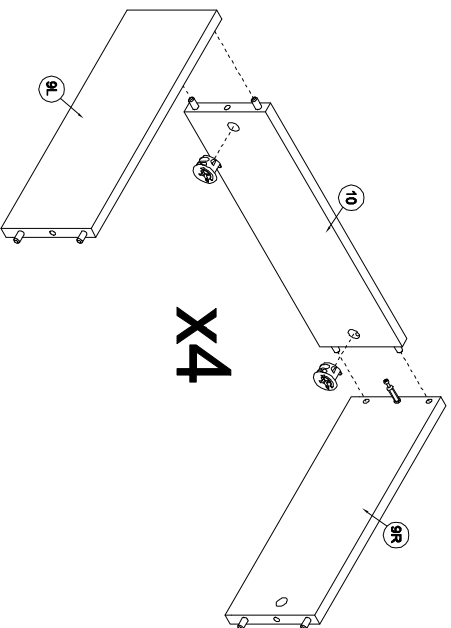


9

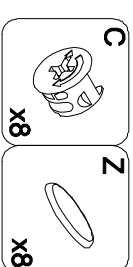
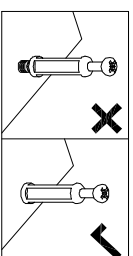
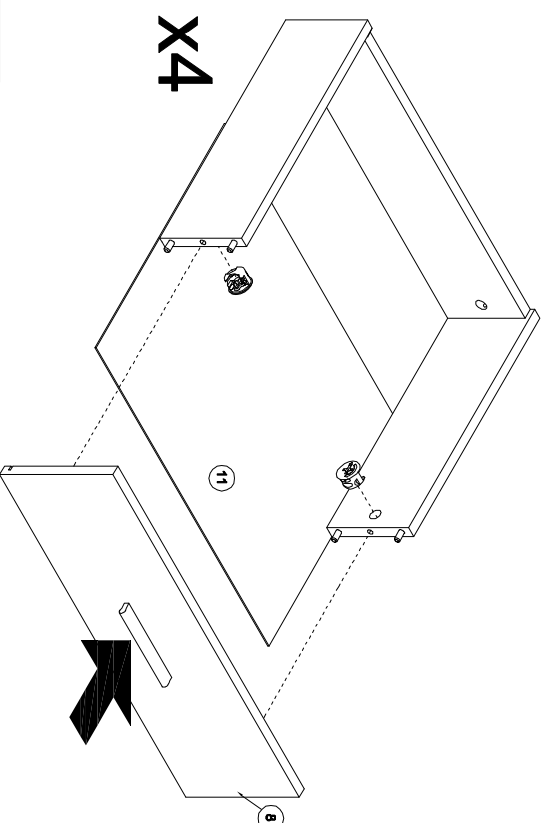
10



11



12



13

